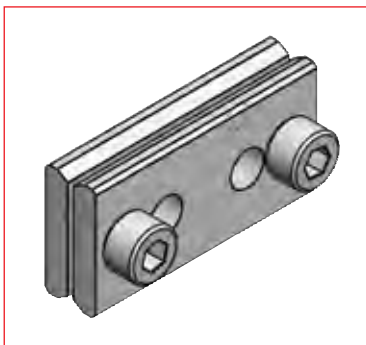


MR and ML rails can be supplied in longer lengths than offered in catalog, by splicing multiple rail segments together. These spliced rails must be ordered from the factory, while specifying the total length and the lengths of individual segments: "Example: MR43-6000 (4000 + 2000)" The spliced rail will be delivered in preselected segments length and with additional counter-bored mounting holes added to the joining locations, in addition to ground ends.

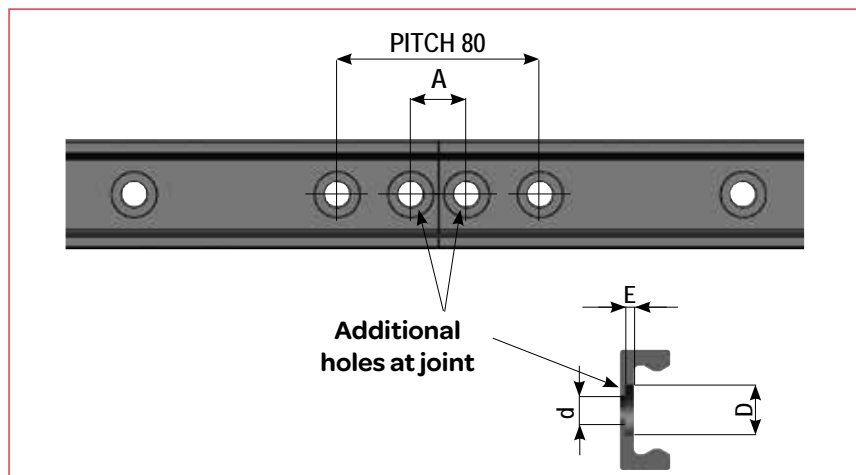
The customer must add additional mounting holes in his structure for these additional holes at the joining location. End-screws for joining is too supplied free, same type as the standard screws for rails with cylindrical fixing holes.

Alignment tool for spliced rails DAGA.

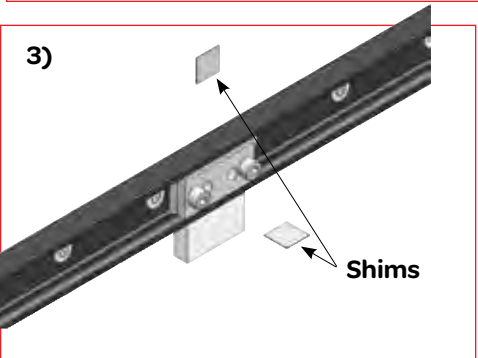
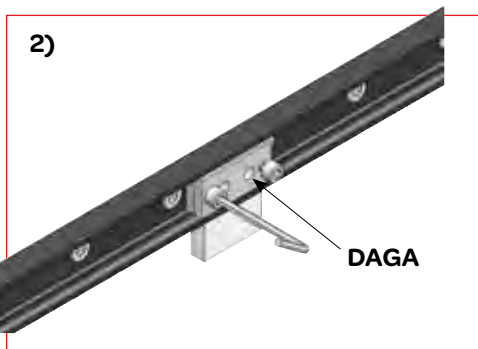
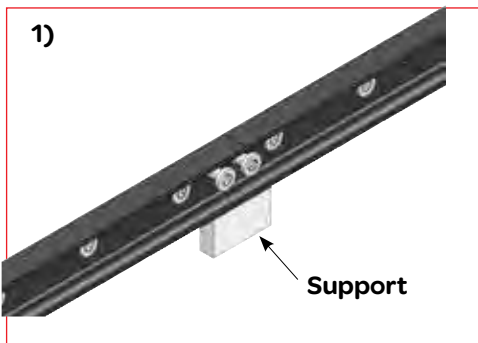
To assure a correct alignment of the rail ends, an appropriate alignment tool can be purchased as a separate item. See drawing/table for product description and codes, at right side.



Joining area for spliced rails



Rail type	Joining screws	Alignment tool	A	D	d	E
MRG18	M4-TORX SP	DAGA-MR18	16	9	5	1,9
MR28	M5-TORX SP	DAGA-MR28	16	11	6	2
MR43	M8-TORX SP	DAGA-MR43	22	18	10	3,2
ML28	M5-TORX SP	DAGA-ML28	16	11	6	2
ML43	M8-TORX SP	DAGA-ML43	22	18	10	3,2
FXR	M6-DIN 7984	DAGA-FXR	20	10,5	6,5	4,4



Installation instructions for rails composed of more lengths

- 1) Begin by supporting the two rail segments at the splice location. Develop a support guide in the area of joining lengths. Insert the alignment tool DAGA from one end of the rail. Install the mounting screws including the two at the splice location, but do not fully tighten them, to allow for small rail movements.
- 2) Place the alignment tool over the splice. Tighten the alignment tool screws to align the rail segments.
- 3) Verify that rail mounting surfaces (back side and lateral side of the rail) are aligned. If not, it may be necessary by use of shims, to maintain alignment after the mounting bolts are tightened and the alignment tool is removed.
- 4) Tighten the bolts at the splice location by passing the Allen key through the holes in the alignment tool. Tighten the other mounting bolts in the rails.
- 5) Loosen the alignment tool and remove it from one end.

